



## PRODUCT DATA SHEET

# EFA-Füller® WH

Fly ash according to DIN EN 450-1 – For concrete according to DIN 1045-2

The fly ash **EFA-Füller® WH** from the power plant in Wilhelmshaven of Uniper Kraftwerke GmbH is a fine-grained pozzolanic binder that consists mainly of  $\text{SiO}_2$  and  $\text{Al}_2\text{O}_3$ . The content of reactive  $\text{SiO}_2$  is at least 25 % by mass. It is a type II concrete addition according to DIN 1045-2: Plain, reinforced and pre-stressed concrete structures – Part 2: Specification, properties, production and conformity of concrete – Application document for use with DIN EN 206-1.

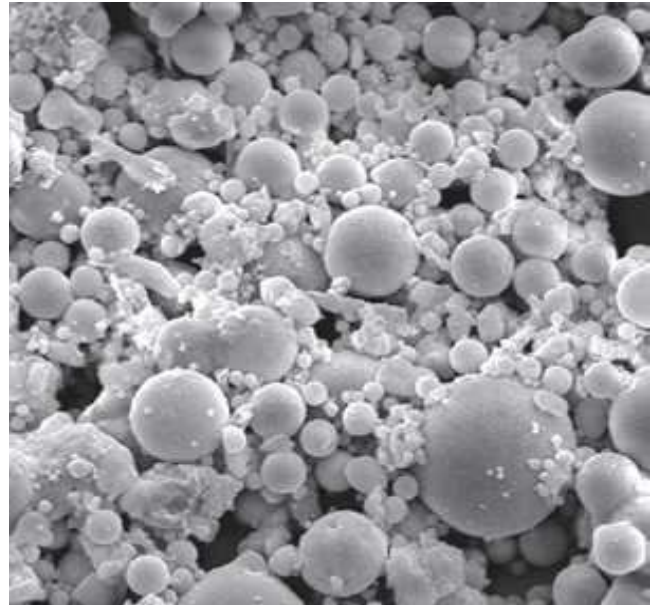
In combination with DIN EN 206-1 DIN 1045-2 regulates the use of **EFA-Füller® WH** as follows:

- paragraph 5.2.5.2.2:
  - minimum cement content
  - maximum permissible water/cement ratio
  - sulphate resistance
  - combined use with aggregates sensitive to alkalis
- paragraph 5.2.5.2.4: the common use of **EFA-Füller® WH** and microsilica
- paragraph 5.3.2: the limits for the fine grain content < 0.125 mm
- paragraph 5.3.4: the use of **EFA-Füller® WH** in subaqueous concrete

The use of **EFA-Füller® WH** in bored cast-in-place piles according to DIN EN 1536 and cast-in-situ concrete diaphragm walls according to DIN EN 1538 is regulated by addendum to the enclosure for parts 2.1/2 and 2.1/6 of “Musterliste der Technischen Baubestimmungen”. According to this paragraphs paragraph 5.3.4 from DIN 1045-2 has to be used for these concretes.

Advantages of **EFA-Füller® WH**:

- cement reduction
- reduction of water demand
- improved workability of fresh concrete including pumping capability
- increased compactability of fresh concrete
- reduction of the hydration temperature, e.g. for mass concrete



scale: 1000:1

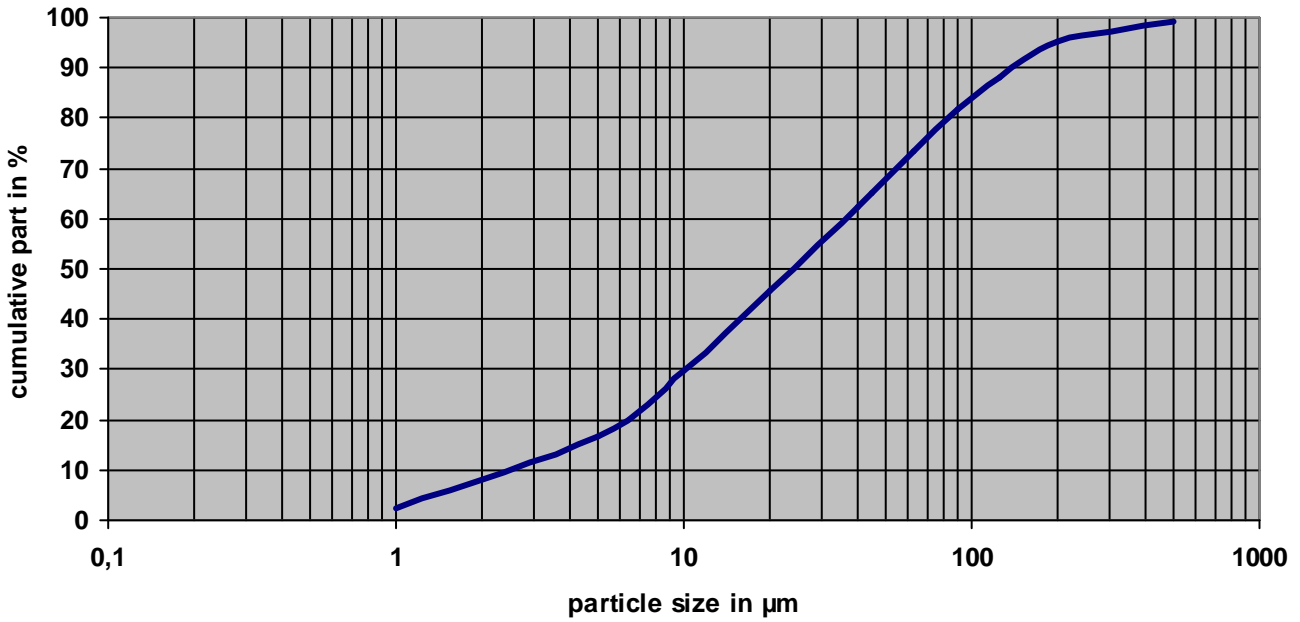
- reduced efflorescence of the concrete
- increased resistance to chemical attacks on concrete, e.g. Sulphate, chloride, sea water

### CHARACTERISTIC VALUES

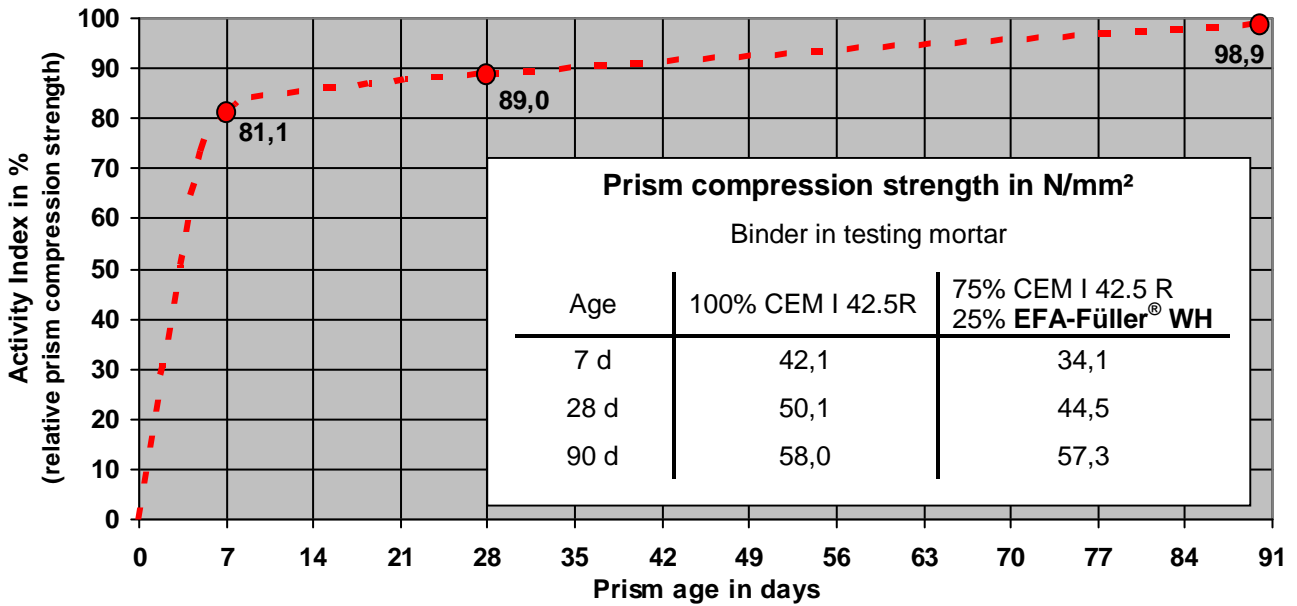
|                                    |                              |
|------------------------------------|------------------------------|
| Loss on ignition: category A       | ≤ 5 % by mass                |
| Fineness > 45 µm                   | 27 ± 10 % by mass            |
| Na <sub>2</sub> O equivalent *     | 2.13 % by mass               |
| Bulk density (DIN EN 459 part 2) * | 1.03 t/m <sup>3</sup>        |
| Particle density                   | 2.31 ± 0.20 t/m <sup>3</sup> |

\* average of the year 2015

PARTICLE SIZE DISTRIBUTION \*



STRENGTH DEVELOPMENT \* (according to DIN EN 196 part 1)



\* average of the year 2015

Version: 10/2016

**BauMineral**

Werk  
Wilhelmshaven

Z-3.31-1780

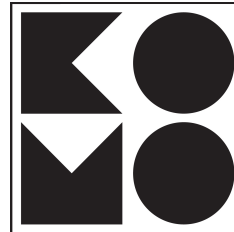
INSTITUT FÜR BAUFORSCHUNG AACHEN

External control and certification

Institut für Bauforschung  
der RWTH Aachen (ibac)  
Schinkelstraße 3  
52062 Aachen

EFA-Füller® WH  
Fly ash according to DIN EN  
450-1

1077 - CPR - 42605101



® Kiwa BMC  
Postbus 70  
2280 AB Rijswijk

BauMineral GmbH  
Hiberniastraße 12  
45699 Herten  
Germany  
Phone: +49 (0) 23 66/509-0  
Fax: +49 (0) 23 66/509-285

Building material testing laboratory  
(Internal quality control)

Internet: [www.baumineral.de](http://www.baumineral.de)  
E-Mail: [baumineral@baumineral.de](mailto:baumineral@baumineral.de)